

CHAIR



Debra Dorrington, AlexanderDorrington, Auckland

Debra is a director at her firm where she specialises in property law. She has practised in property law for more than 35 years and deals with a full range of property matters. Her clients include both property developers and property investors (both corporate and private). She is a long-standing member of the NZLS Property Law Section executive committee and a director of NZLS CLE Ltd.

KEYNOTE SPEAKERS



Ngahihi Bidois, The Face of New Zealand, Rotorua

Ngahihi o te ra Bidois is “The Face of New Zealand” and is an award winning International Leadership Speaker, author, businessman, leader, husband and father. He has presented throughout the world including the New York office of Google.

Ngahihi is a recipient of the National Professional Speakers Association New Zealand Speaker of the Year, Inspirational Speaker of the Year and Master of Ceremonies of the Year Awards.

He also has a Marketing Business degree, a post graduate teaching diploma, a tourism qualification, a Certificate in Company Direction and a Masters in Education with honours. Ngahihi has many years of leadership experience which he brings to his presentations.



Dr Tom Mulholland, Auckland Hospital, Auckland

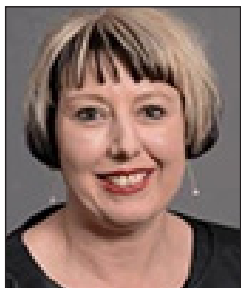
Dr Mulholland is an Emergency Department Physician at Auckland Hospital, a lecturer in Psychological Medicine at Auckland clinical school, founder of the Healthy Thinking Institute and developer of global wellbeing App KYND (Know Your Numbers Dashboard).

With more than 25 years of clinical experience, he has written two internationally best-selling books on Healthy Thinking including Healthy Thinking – How to Turn Life’s Lemons into Lemonade and The Power of Healthy Thinking – To Change Your Attitude and Your Life.

Dr Mulholland is an expert on workplace stress, emotional control, productivity and psychoneuroimmunology. He has given over 1000 keynote presentations on wellbeing to international clients like Google, Microsoft, and Hilton and for the last three years has been touring and speaking around New Zealand in his retro Chevy V8 ambulance.

Dr Mulholland is recognised as host of his own daily TV chat show on TV2 and weekly talk show on RadioLive and is a regular writer for the Sunday Star Times on health and wellbeing.

SPEAKERS



Lisa Barrett, LINZ, Wellington

Lisa has a background in policy, and has in-depth experience working within regulatory environments, with a focus on economic and social issues.



Jayne Cobham, Positive Performance, Auckland

Jayne is a registered psychologist who works alongside organisations, and the people who bring them to life, to get the best out of each other.



Ben France-Hudson, University of Otago, Dunedin

Ben specialises in the law and theory of private property, with a particular focus on natural resources and land law.



Victoria Kingi, Papakainga Solutions Limited, Auckland

Victoria specialises in housing and commercial developments for Māori/Iwi and has project managed numerous Papakainga housing projects.



Richard Manthel, AML Solutions, Auckland

Richard co-founded AML Solutions in 2012 growing the business to NZ's leading AML/CFT consultancy and audit firm.

SPEAKERS



Chris Moore, Greenwood Roche, Auckland

Chris specialises in the legal and commercial aspects of commercial property investment and development.



Robbie Muir, LINZ, Wellington

Robbie has held the position of Registrar-General of Land since 2000 and heads one of the regulatory units within Land Information New Zealand.



Mark Pascall, Blockchain Labs NZ, Wellington

Mark is cofounder of Blockchain Labs NZ, organiser of two international blockchain conferences and regularly features on TV/radio/online discussing blockchain/cryptocurrency issues.



Professor Jacinta Ruru, University of Otago, Dunedin

Jacinta is Professor of Law at the University of Otago and Co-Director of Ngā Pae o te Māramatanga New Zealand's Centre of Māori Research Excellence.



Stephen Tomlinson, Tomlinson Law, Christchurch

Stephen is a tax lawyer and advises property developers, property investors, accounting firms and law firms on a wide range of tax issues.

SPEAKERS



Nick Tuffley, ASB Bank, Auckland

Since starting out in 1997 as an economist, it's fair to say Nick has seen a few hair-raising moments over the years, including the Asian Financial Crisis and the Global Financial Crisis.



John Walton, Bankside Chambers, Auckland

John is a construction law specialist acting principally as arbitrator, construction adjudicator and commercial mediator.



Leo Watson, Barrister and Solicitor, Napier

Leo specialises in Māori land law and indigenous rights. He was counsel in the claim to the Waitangi Tribunal to review Te Ture Whenua Māori Act 1993.



Jeremy Whyte, Russell McVeagh, Auckland

Jeremy practises in the residential and commercial property areas together with unit titles, leasing, banking and finance, company and estate planning and acts for a diverse range of property investors and developers.



Dominic Woolrych, LawPath, Sydney

Dominic is the CEO of LawPath, Australia's leading online legal platform. Dominic is a thought leader in legal disruption and recently won the Australian Legal Innovation Index.

SPEAKERS



Dr Rachel Zajac, University of Otago, Dunedin

Rachel is an Associate Professor in Psychology, where she studies how memory and decision-making can contribute to miscarriages of justice.

CONTENTS

In session order

Economic Climate Change

(There is no paper for this session) 1

Nick Tuffley

Continuity and Change – the Land Transfer Act 2017

Continuity and Change – the Land Transfer Act 2017 3

Ben France-Hudson and Robbie Muir

Overseas Investment Update

(There is no paper for this session) 31

Lisa Barrett

Bias: What Your Brain Does When You're Not Looking

Bias: What Your Brain Does When You're Not Looking 33

Dr Rachel Zajac

Construction Law for Property Lawyers – Who Don't Do Much Construction Law

Construction Law for Property Lawyers Who Don't Do Much Construction Law.. 47

John Walton

Obligations of Residential Landlords are Changing – are you sufficiently equipped to advise your clients?

Obligations of Residential Landlaords are Changing – are you sufficiently equipped to advise your clients? 63

Jeremy Whyte

Legal Technology and the Future

Legal Technology and the Future..... 85

Dominic Woolrych

What is the Blockchain/Smart Contracts and Why Lawyers Should Be Afraid

(There is no paper for this session) 95

Mark Pascall

Keynote – How to Live to 100 and Stay Out of the Emergency Department
(There is no paper for this session) 97
Dr Tom Mulholland

AML/CFT – What Lawyers Need to Know
Phase 2 of the AML/CFT Act: practical implementation considerations for lawyers
..... 99
Richard Manthel

An Introduction to Māori Land, Taonga and the Māori Land Court
An Introduction to Māori Land, Taonga and the Māori Land Court 105
Professor Jacinta Ruru and Leo Watson

New Horizons – the development of Māori and treaty settlement land including innovative affordable housing outcomes
New Horizons – the development of Māori and treaty settlement land including innovative affordable housing outcomes 131
Victoria Kingi

Income Tax and Land Transactions – the niggly bits
Income Tax and Land Transactions – the niggly bits 147
Stephen Tomlinson

Flexibility – a two-way street?
Flexibility – a two-way street? 169
Jayne Cobham

Export Quality... or rotten at the core?
Export Quality... or rotten at the core? 177
Chris Moore

Keynote - Inspiring Tomorrow’s Leaders? How Ancient Wisdom Could Have a Key Role in Your Success
(There is no paper for this session) 207
Ngahihi Bidois

CONTENTS

Alphabetical by author/presenter

Author		Title	Page
Barrett	Lisa	No paper	31
Bidois	Ngahihi	No paper	207
Cobham	Jayne	Flexibility – a two-way street?	169
France-Hudson	Ben	Continuity and Change – the Land Transfer Act 2017 <i>Joint paper with Robbie Muir</i>	3
Kingi	Victoria	New Horizons – the development of Māori and treaty settlement land including innovative affordable housing outcomes >	131
Manthel	Richard	Phase 2 of the AML/CFT Act: practical implementation considerations for lawyers	99
Moore	Chris	Export Quality... or rotten at the core?	177
Muir	Robbie	Continuity and Change – the Land Transfer Act 2017 <i>Joint paper with Ben France-Hudson</i>	3
Pascall	Mark	No paper	95
Ruru	Prof Jacinta	An Introduction to Māori Land, Taonga and the Māori Land Court <i>Joint paper with Leo Watson</i>	105
Tomlinson	Stephen	Income Tax and Land Transactions – the niggly bits	147
Tuffley	Nick	No paper	1

Walton	John	Construction Law for Property Lawyers Who Don't Do Much Construction Law	47
Watson	Leo	An Introduction to Māori Land, Taonga and the Māori Land Court <i>Joint paper with Prof Jacinta Ruru</i>	105
Whyte	Jeremy	Obligations of Residential Landlords are Changing – are you sufficiently equipped to advise your clients?	63
Woolrych	Dominic	Legal Technology and the Future	85
Zajac	Dr Rachel	Bias: What Your Brain Does When You're Not Looking	33

CONTENTS

ECONOMIC CLIMATE CHANGE	1
CONTINUITY AND CHANGE – THE LAND TRANSFER ACT 2017	3
PART I: CHANGES FROM A LINZ PERSPECTIVE AND IMPLICATIONS FOR THE REGISTRY	5
PART II: IMPORTANT CHANGES FROM A PRACTITIONER PERSPECTIVE.....	15
OVERSEAS INVESTMENT UPDATE.....	31
BIAS: WHAT YOUR BRAIN DOES WHEN YOU’RE NOT LOOKING.....	33
HABITS OF A WELL-FUNCTIONING BRAIN	35
HOW CAN WE STOP THESE PROCESSES FROM IMPAIRING OUR DECISIONS?.....	42
FURTHER READING.....	43
CONSTRUCTION LAW FOR PROPERTY LAWYERS WHO DON’T DO MUCH CONSTRUCTION LAW	45
INTRODUCTION	47
CONTRACT STRUCTURE – DO I NEED TO READ THE SPECIFICATION?.....	48
WHO AND WHAT IS THE ENGINEER?	53
TENDER OR NEGOTIATION?	55
DO I RELY ON THE GENERAL CONDITIONS? WHAT SHOULD GO INTO THE SPECIAL CONDITIONS?	57
AWARD – DO I NEED TO DO ANYTHING ELSE?	60
CONCLUSION	61
OBLIGATIONS OF RESIDENTIAL LANDLORDS ARE CHANGING – ARE YOU SUFFICIENTLY EQUIPPED TO ADVISE YOUR CLIENTS?	63
STATUS OF MBIE PROPOSED REFORMS.....	65
PART 1 OF THE BILL – AMENDMENTS RELATING TO TENANT LIABILITY AND PREMISES UNLAWFUL FOR RESIDENTIAL USE.....	65
RENTAL PREMISES THAT ARE NOT LAWFUL FOR RESIDENTIAL PURPOSES.....	68
PART 2 OF THE BILL – AMENDMENTS RELATING TO METHAMPHETAMINE CONTAMINATION IN RENTAL PREMISES.....	73
SMOKE ALARMS	82
CONCLUSION	84
LEGAL TECHNOLOGY AND THE FUTURE	85
TECHNICAL BARRIERS	88
ECONOMIC BARRIERS	90
CULTURAL BARRIERS	91
WHAT IS THE BLOCKCHAIN/SMART CONTRACTS AND WHY LAWYERS SHOULD BE AFRAID.....	95
KEYNOTE- HOW TO LIVE TO 100 AND STAY OUT OF THE EMERGENCY DEPARTMENT97	
PHASE 2 OF THE AML/CFT ACT: PRACTICAL IMPLEMENTATION CONSIDERATIONS FOR LAWYERS.....	99
INTRODUCTION	101
LEGAL SERVICES CAPTURED	101
WHAT OBLIGATIONS WILL APPLY TO LAWYERS?.....	102
APPOINTMENT OF AML/CFT COMPLIANCE OFFICER	102
RISK ASSESSMENT.....	102
COMPLIANCE PROGRAMME.....	102
CDD	103
TRANSACTION MONITORING.....	103
AN INTRODUCTION TO MĀORI LAND, TAONGA AND THE MĀORI LAND COURT.....	105
INTRODUCTION	107
TIKANGA PRINCIPLES RELATING TO MĀORI PROPERTY	108
COLONIAL MĀORI LAND LAW	110

CURRENT MĀORI LAND LAW	111
CONCLUSION.....	130
NEW HORIZONS – THE DEVELOPMENT OF MĀORI AND TREATY SETTLEMENT LAND INCLUDING AFFORDABLE HOUSING OUTCOMES	131
INTRODUCTION	133
SOCIO-HISTORIC OVERVIEW	134
THE COLONIAL BLUEPRINT.....	134
HOUSING NEED.....	135
CHALLENGES	136
GOVERNMENT RESPONSES.....	137
MĀORI RESPONSE.....	139
NGĀ PŌTIKI SHARED EQUITY MODEL.....	141
COLLABORATION AND SCALE AMONG MĀORI ORGANISATIONS	141
FINAL THOUGHTS	142
INCOME TAX AND LAND TRANSACTIONS – THE NIGGLY BITS	147
INTRODUCTION	149
BRIGHT-LINE TEST.....	150
TAINING BY ASSOCIATION	158
CONCLUSION.....	162
CASE STUDY A – BRIGHT-LINE TEST: APPLICATION OF MAIN HOME EXEMPTION TO PROPERTY HELD IN TRUST	164
CASE STUDY B – CHOICE OF STRUCTURE	166
FLEXIBILITY – A TWO WAY STREET?	169
WHAT IS A FLEXIBLE WORKPLACE?	171
THE TWO-WAY STREET THAT SUPPORTS A FLEXIBLE WORKPLACE	172
REFERENCES	176
EXPORT QUALITY... OR ROTTEN AT THE CORE?	177
INTRODUCTION	179
WHAT IS A DUE DILIGENCE INVESTIGATION?	179
WHY UNDERTAKE A DUE DILIGENCE?	179
WHEN SHOULD YOU UNDERTAKE A DUE DILIGENCE?	180
ADDITIONAL EXPOSURE TO NEGLIGENCE?	181
WHAT DUE DILIGENCE INVESTIGATIONS CAN BE UNDERTAKEN	182
DOCUMENTATION	198
VENDOR DUE DILIGENCE.....	204
CONCLUSION.....	205
KEYNOTE - INSPIRING TOMORROW’S LEADERS? HOW ANCIENT WISDOM COULD HAVE A KEY ROLE IN YOUR SUCCESS	207